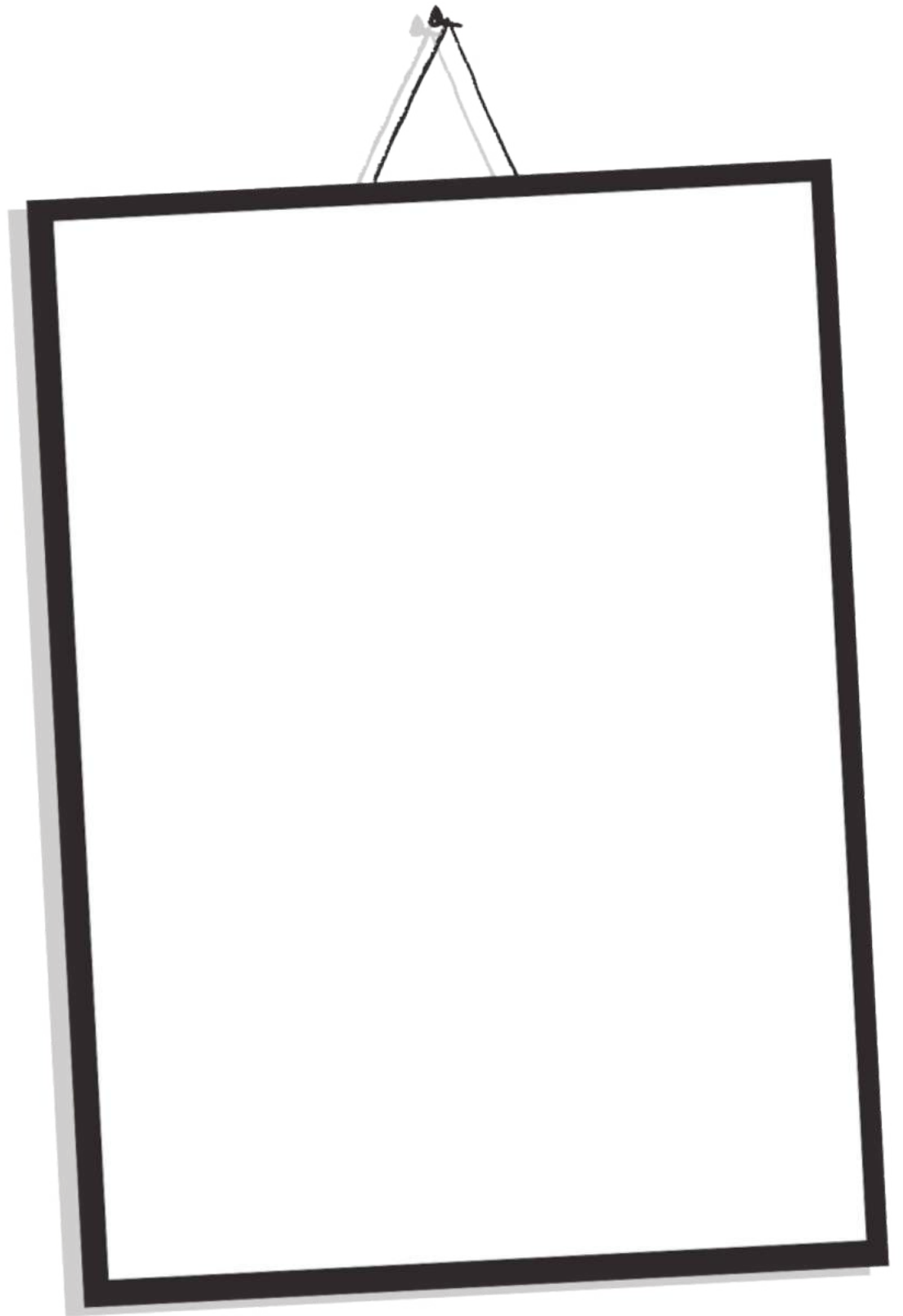
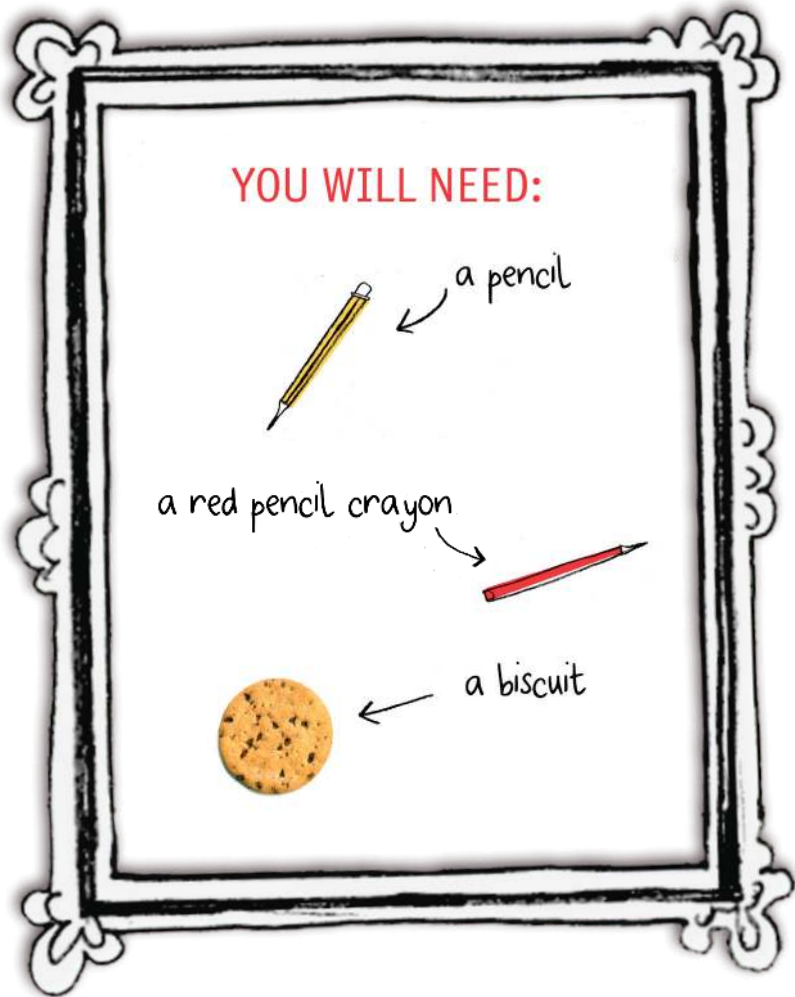


# HOW TO DRAW... CLAUDE.



**STEP 1:**

Eat the biscuit

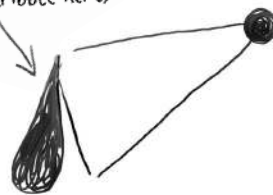


**STEP 2:**

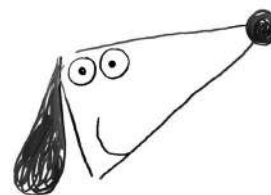


**STEP 3:**

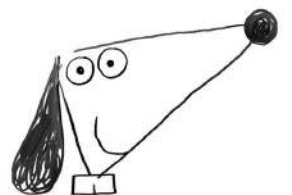
(It's ok to scribble here)



**STEP 4:**

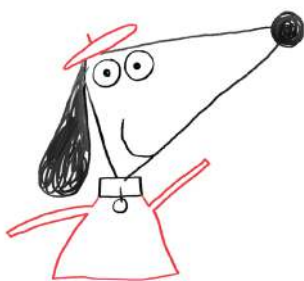


**STEP 5:**

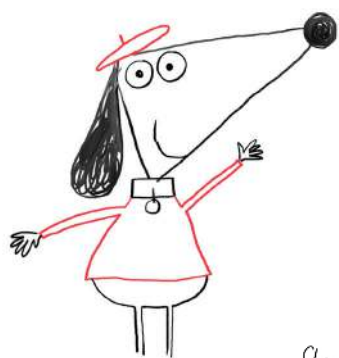


**STEP 6:**

Use your nice RED pencil crayon



**STEP 7:**



**STEP 8:**



**TOP TIP:**  
Claude's tail looks like he has half a banana stuck to his bottom!

**STEP 9:**

Do some jolly colouring in!



**STEP 10:**

Don't forget his eyebrows!



NOW HAVE ONE OF SIR BOBBLYSOCK'S LONG LIE DOWNS

